

Patient Inspired. Physician Focused.

Optimize your ultrasound-guided breast biopsy with Hologic,
the most recommended brand in women's imaging and breast biopsy.¹

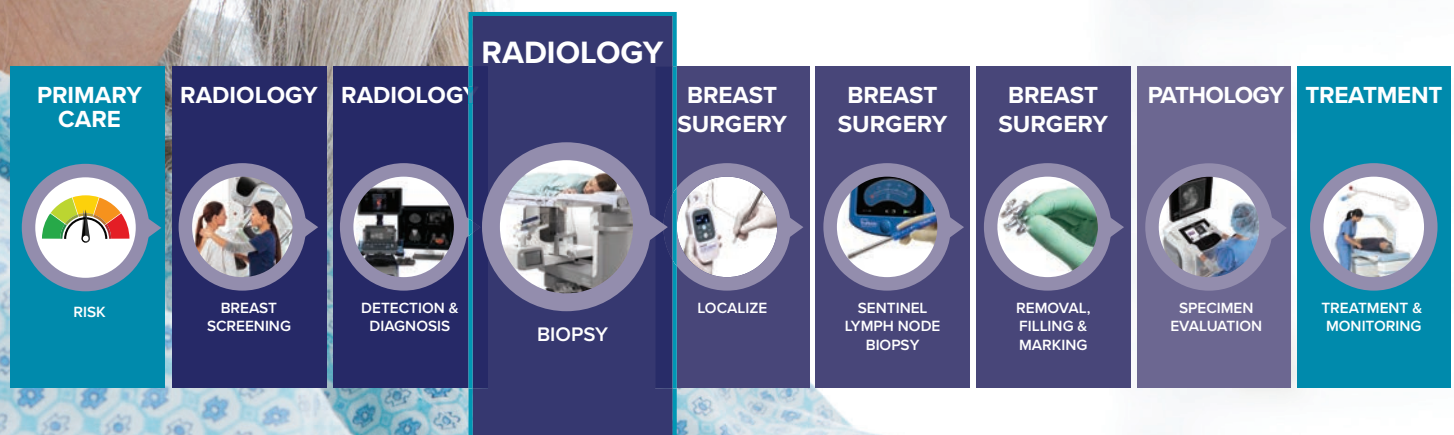




A Better Biopsy Experience.

Does your ultrasound biopsy make the **lowest possible impact?**

At Hologic we understand the tremendous anxiety patients have when facing a breast biopsy and the pressure as a clinician to drive efficiency while maintaining a high level of care. We are committed to **minimizing impact** on the patient and provider with solutions that **optimize workflows**, creating **a better patient experience**, and **offering an alternative** to open surgical biopsy.



The Hologic Suite of Solutions. EMPOWERING YOUR CHOICE.



ATEC™ – Powerful tethered vacuum. Designed for compassionate patient care.



Setup in less than one minute, **no programming** required.



Acquire **4 large cores in less than 20 seconds** with a single insertion and clearly visible aperture.²



Deliver **uninterrupted local anesthetic**.



Completely remove the mass with without surgery callback.*



Celero™ – Untethered freedom. Designed for more control, consistent cores, and better access.



Make **fewer insertions** for accurate diagnosis with cores more than **two times larger** than other 14G SLC devices.³



Ensure large samples and consistent cores with the **first** spring-loaded core device with **integrated vacuum technology**.⁴



Confidently approach challenging lesions.
• 11° trocar tip for smooth penetration
• 10mm dead space
• Option to prefire for no throw insertion and clearly visible aperture.



Sertera™ – Exceptional control where you need it.



Simple one-handed operation with **patented HandForm™ design**
• Lightweight ergonomics comfortable for many hand sizes
• Two firing modes for extra control when you need it

In an initial survey, 95% of physicians stated that the Sertera biopsy device was **easy to arm & fire and allowed for one-handed operation**. 9 out of 10 physicians said — **it is easy to use**.⁵



Approaching challenging lesions with confidence. **7 out of 10 physicians felt the Sertera biopsy device resulted in greater accuracy**.⁵

*FDA cleared to remove benign fibroadenomas

A Shape for Any Case.

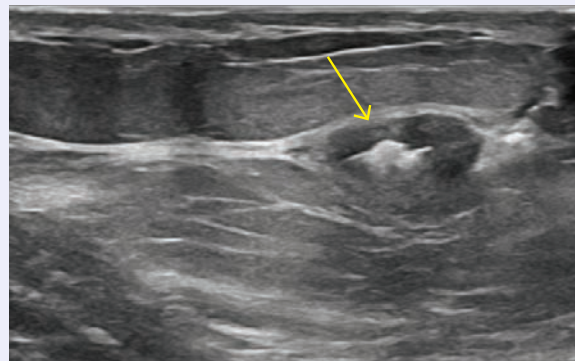
Distinct shapes with options for great **long-term ultrasound visibility**. Designed so you can identify sites with confidence.



Tumark® Marker

Plan your procedure. Localize the biopsy site before surgery and after successful therapy with a marker **designed for long term visibility**.^{*6}

Tumark® under Ultrasound



Vision marker

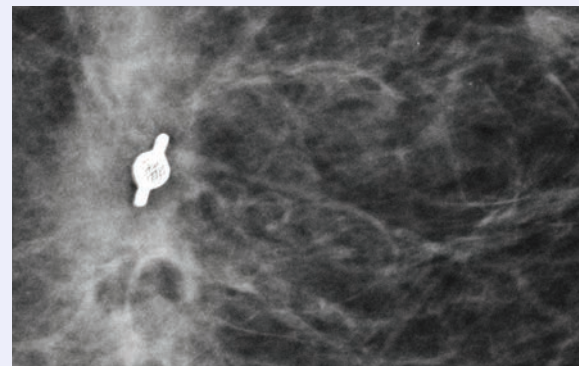
Image courtesy of Dr. Peggy Avagliano

In **85% of marker placements**, physicians stated that the ultrasound visibility was good to excellent upon deployment. **91% of markers placed did not migrate**, as measured on the post procedure mammogram.⁶



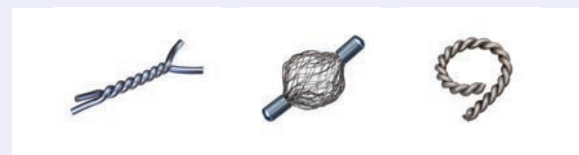
Minimize migration with a **distinct 3D marker shape** designed to anchor into place.

Tumark® under Mammography



Vision marker

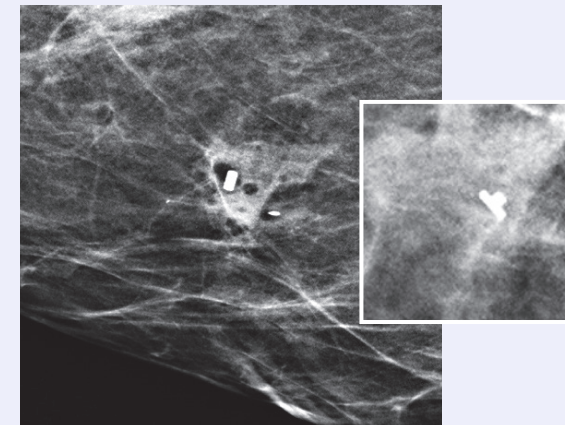
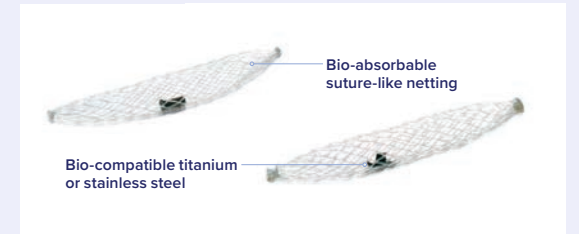
Image courtesy of Dr. Lashonda Soma



SecurMark® Marker

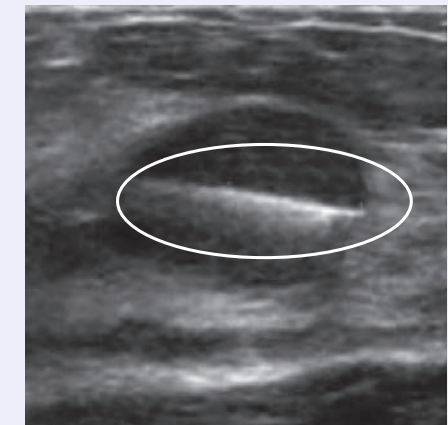
Enhance follow up ultrasound visualization three to four weeks post-biopsy with bio-absorbable suture-like netting.^{7*}

Minimize movement in the biopsy cavity with the bio-absorbable suture-like net. Mark multiple sites with five distinct bio-compatible titanium or stainless-steel permanent shapes.



Top Hat marker

SecurMark biopsy site marker in titanium, Top Hat shape under mammography



Infinity marker

SecurMark biopsy site marker in stainless steel, Infinity shape under mammography



TriMark® and CeleroMark™ Markers

Simple. Reliable.

Optimal for thin-breasted patients and superficial lesions. Smooth marker deployment to the biopsy site with rigid end deploy beveled tip.



* Visibility is dependent on surrounding tissue, experience may vary.

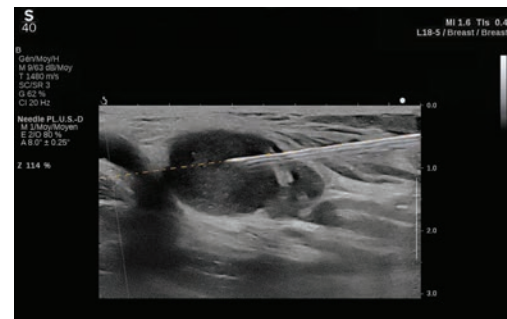
Optimize your Biopsy Suite.

With **exceptional breast imaging options** and **solutions to optimize your unique space.**

SuperSonic™ MACH 40 Ultrasound System with UltraFast™ Imaging

Offers exceptional image quality and innovative modes designed to help enhance accuracy and efficiency.

- **Needle PLUS™** imaging was developed to provide enhanced needle visibility and introduce unique functionality – needle trajectory prediction. Optimizations for a large range of needles and automated enhancements may offer more control, and ultimately additional confidence when performing biopsies.



Needle PLUS imaging



Viera® Breast Performance Software with Clarius HD

The first wireless, handheld breast ultrasound device delivers high quality, accurate diagnostic images at the point of care, enabling optimization of your clinical workflow and patient pathway—all at an affordable cost.

- Exclusive applications for diagnostic breast and interventional breast with dense breast, **needle and marker enhancement modes**
- Customizable breast annotations and breast reporting package
- Exceptional portability, non-tethered, handheld, take along anywhere—office, exam room, biopsy or surgical suite



Hologic's Affirm® Prone Ultrasound Filler Pad

Hologic's Affirm® Prone Biopsy System is the world's **FIRST and ONLY** dedicated prone stereotactic biopsy system with 2D/3D™ biopsy capabilities.

For **maximum flexibility** in breast exams and biopsy procedures, the Affirm® Prone Filler Pad provides a versatile multi-modality surface. This solid center pad converts the tabletop of the Affirm® Prone Breast Biopsy System into a surface that can be used for breast biopsies or ultrasound screening and diagnostic exams.



When you are capacity constrained and need an overflow solution, pair these solutions together to transform your biopsy suite into a versatile procedure space to help maximize room utilization.

Talk to your Hologic representative about what an optimized ultrasound biopsy could look like for you.



Hologic continues to lead the way in offering physicians more compassionate and clinically effective biopsy solutions. Our goal is to support intervention for all patients by providing more choices for ultrasound-guided breast biopsy. Therefore, our products are designed to reduce the amount of time, cost and patient discomfort associated with an ultrasound-guided biopsy.

References:

1. Data on file with Hologic. [NOTE to insert citation when approved]
2. 4.5 second tissue acquisition. Data on file at Hologic, Inc.
3. Englander, B. White Paper. 2013, Hologic WP-00006
4. Data on file at Hologic, Inc.
5. In an initial survey, 95% of physicians stated that the Sertera biopsy device was easy to arm & fire and allowed for one-handed operation. Data collected from 100 cases performed at various sites using the Sertera biopsy device.
6. Tumark[®] Marker Data Collection Study, 2017, DHM-06169, 3 clinicians at 3 hospitals for 90 marker placements, 2017.
7. Clinical Evaluation Report, DHM-08585. Visibility is dependent on surrounding tissue, experience may vary.

www.hologic.com | BSHSalesSupportUS@hologic.com | + 1.800.442.9892

**Hologic Headquarters
United States / Latin America**
250 Campus Drive
Marlborough, MA 01752
USA Tel: +1.508.263.2900
Sales: +1.781.999.7453
Fax: +1.781.280.0668
Email: info@hologic.com

Hologic Europe
Everest (Cross Point)
Leuvensesteenweg
250A 1800
Vilvoorde, Belgium
Tel: +32.2.711.4680
Fax: +32.2.725.2087

Hologic Asia Pacific Limited
One Temasek Avenue
21-04 Millenia Tower
Singapore 03192
Tel: +65 6206 5833

Hologic Australia
Suite 302, Level 3
2 Lyon Park Road
Macquarie Park NSW 2113
Australia
Tel: +61.2.9888.8000
Fax: +61.2.9870.7555

PB-00102 rev 005 (06/20) Hologic Inc. ©2020 All rights reserved. Hologic, Affirm, Affirm Prone, Celero, Needle PLUS, SecurMark, Sertera, SuperSonic, TriMark, Tumark, Ultra Fast, Viera and associated logos are trademarks and/or registered trademarks of Hologic, Inc., and/or its subsidiaries in the United States and/or other countries. This information is intended for medical professionals in the U.S. and other markets and is not intended as a product solicitation or promotion where such activities are prohibited. Because Hologic materials are distributed through websites, eBroadcasts and tradeshows, it is not always possible to control where such materials appear. For specific information on what products are available for sale in a particular country, please contact your local Hologic representative.